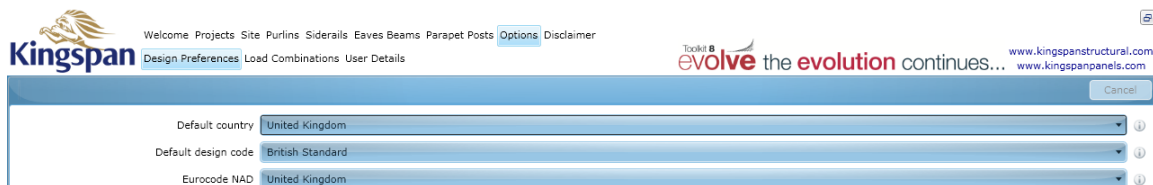


Toolkit 8 Design Software User Guide for the Republic of Ireland

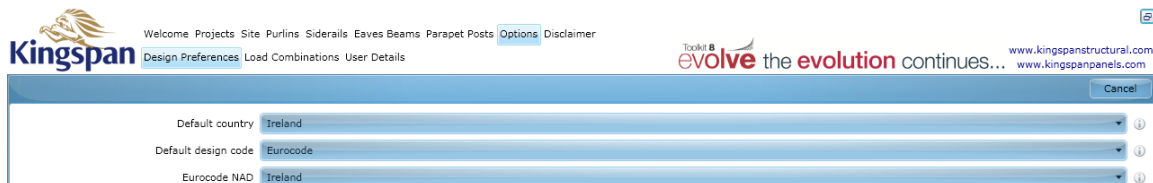
Configuration

The Toolkit 8 design software is intuitive, and is therefore easy to navigate. The software firstly needs to be re-configured for the Republic of Ireland (ROI) National Application Document (NAD).

- Select the 'Options' tab at the top of the welcome screen.



- Select 'Design Preferences' to show the 'Default country', 'Default design code' and 'Eurocode NAD' tabs.
- Default country – select Ireland.
- Default design code – select Eurocode.
- Eurocode NAD – select Ireland.



The Toolkit 8 design software will now be configured for the ROI, and will default to Eurocode design using the ROI NAD and Eurocode load combinations. It is possible to change the load combinations and partial load factors under the 'Load Combinations' tab under 'Options'. We would strongly advise, however, that users avoid making changes to the standard Eurocode combinations and factors for anything other than the most special of cases, and only once they are fully familiar with both the requirements of Eurocode and the operation of the Toolkit 8 design software.

Operation

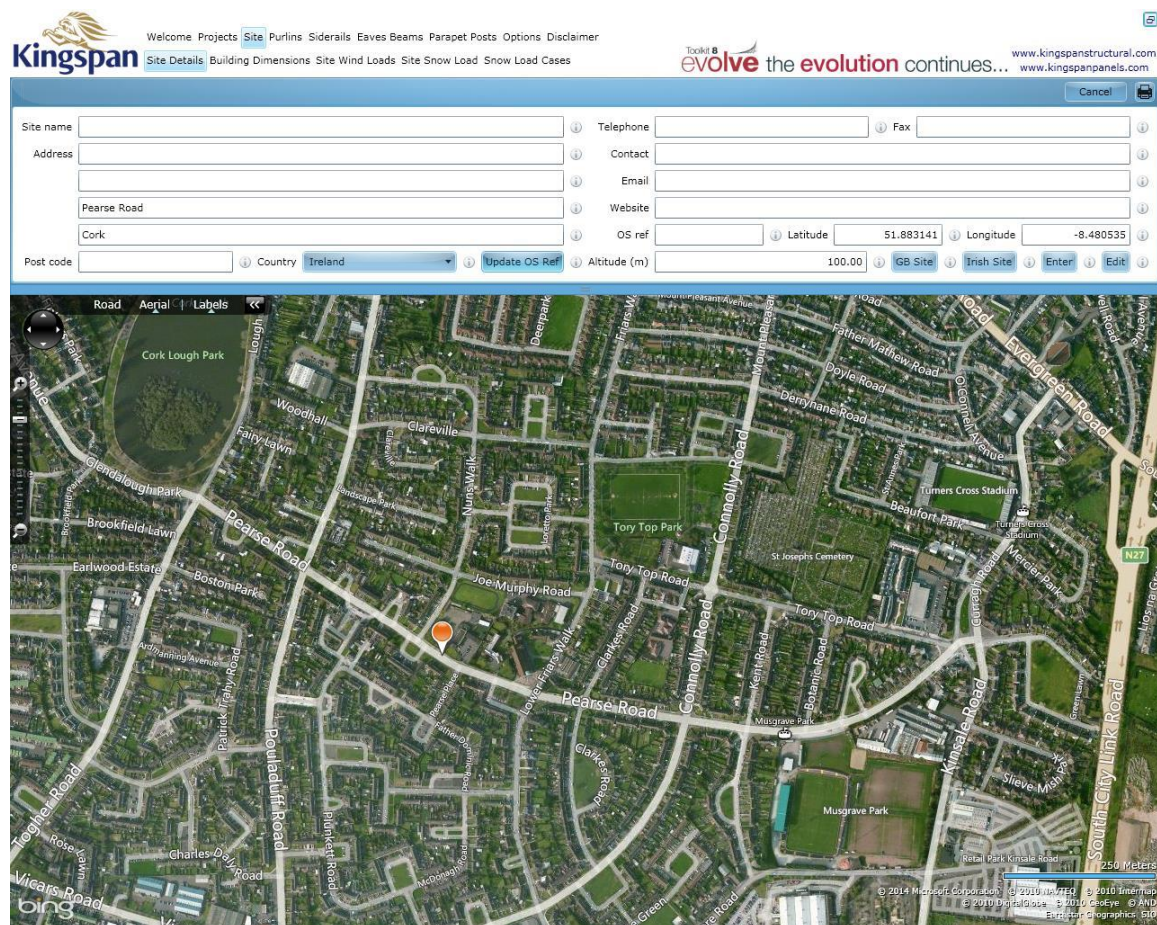
Operation of the software is straightforward using normal MS Windows and browser controls. The software functions best in a 32bit browser (use of a 64bit browser can cause issues when printing via MS Word).

Kingspan Limited

Carrickmacross Road, Kingscourt, Co Cavan, Ireland
t: +353 (0) 42 96 98500 f: +353 (0) 42 96 98572 www.kingspanstructural.com

Site Location

- Select the 'Site' tab to display address fields.
- As the ROI does not have postcodes, it is important that the address fields are filled in backwards. Start with the town or city name, and then fill in the address. For Pearse Road, Cork, for example, first type Cork in the last address field, and then enter Pearse Road in the field above (see example below).
- Please note that the maps are not interactive, and location cannot be set by clicking directly on the map.



Welcome Projects **Site** Purlins Siderails Eaves Beams Parapet Posts Options Disclaimer

Site Details Building Dimensions Site Wind Loads Site Snow Load Snow Load Cases

evolve the evolution continues... www.kingspanstructural.com
www.kingspanpanels.com

Cancel

Site name Telephone Fax

Address Contact

Email

Pearse Road Website

Cork OS ref Latitude Longitude

Post code Country Update OS Ref Altitude (m) GB Site Irish Site Enter Edit

Map showing Pearse Road, Cork, Ireland. The map includes labels for various streets such as Pearse Road, Conolly Road, and South City Link Road. A location pin is placed on Pearse Road.

Wind Analysis

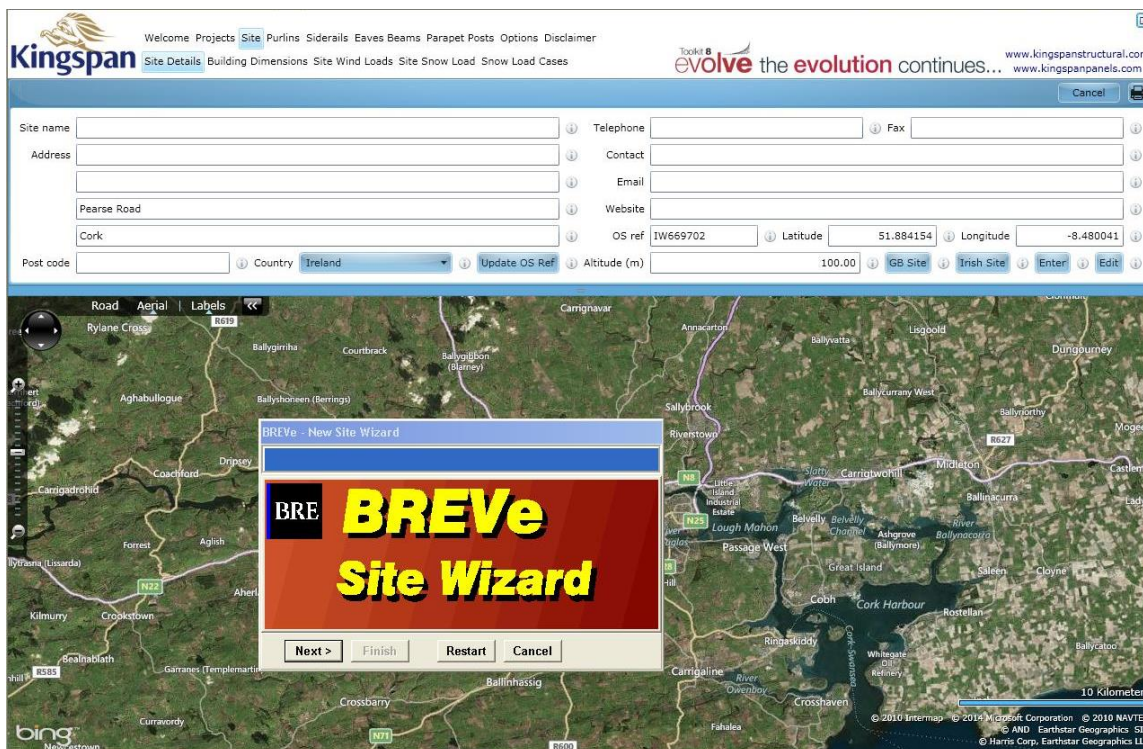
- Select the 'Update OS Ref' tab and follow the options displayed in the BREVe Site Wizard. Alternatively, enter the ROI map reference (e.g. IW669702) in the 'OS ref' field to the right of the address (see example below). Always check that the location is exactly as intended, to ensure that the correct wind loads are calculated.

Kingspan Limited

Carrickmacross Road, Kingscourt, Co Cavan, Ireland

t: +353 (0) 42 96 98500 f: +353 (0) 42 96 98572 www.kingspanstructural.com

Registered Office at Greenfield Business Park No.2, Greenfield, Holywell, Flintshire, N. Wales CH8 7GJ. Company Reg. No. 1037468



- It is not necessary to run the wind analysis if the applied load values for the purlin or rail design are already known. Simply select either the 'Purlins' or 'Siderails' tab and input the span and applied loads. The software will then suggest the appropriate section from the Multibeam or Multichannel range.

Snow Load

- The Toolkit 8 design software automatically uses and displays the snow map from the Eurocode by default. To overwrite this with values from the ROI NAD, the user must select the 'Site Snow Load' tab and manually enter the value in the 'Site snow load – Sk (kN/m²)' field (see example below).



For further information please contact the Kingspan Technical Services Department:

t: +353 (0) 42 96 98529

e: gerry.martin@kingspan.com or noel.farrelly@kingspan.com

Kingspan Limited

Carrickmacross Road, Kingscourt, Co Cavan, Ireland

t: +353 (0) 42 96 98500 f: +353 (0) 42 96 98572 www.kingspanstructural.com

Registered Office at Greenfield Business Park No.2, Greenfield, Holywell, Flintshire, N. Wales CH8 7GJ. Company Reg. No. 1037468