

HERCULES®

Renowned, resilient doors. By Kingspan

BI-PART SLIDING DOORS

TECHNICAL SPECIFICATIONS

BI-PART SLIDING DOORS

EBP/MBP



The Hercules Bi-Part Sliding Door is ideal for applications where fast opening and seal tight closing are important. These doors are perfect for material handling traffic such as forklifts and pallet jacks.

All Bi-Part sliding doors are available for both cooler and freezer applications and for interior or exterior use. The Hercules Bi Part Sliding Door is also available with both electric (EBP) and manual operation (MBP).

Design Features

- 5 year limited warranty
- Every electric door is bench tested before shipping
- Durability and safety are ensured by use of NEMA-4 control box for electric doors
- Advanced, adaptive controller for electric doors with 7 programmable inputs for accessories
- Heavy duty hardware and tracks are built for long lasting usage.

- Bearings are sealed in grease and require no further lubrication. Maintenance is low and consists of light machine oil on easy to remove drive chain and track.
- Pneumatic safety device for electric doors along the entire length of the leading edge stops and reverses the door to open position if an obstruction is encountered while closing

Material Specifications

(Custom design available)

Height: 7' 8' 10' 12' 14'

Width: 5' 6' 8' 10'

Thickness: 4" 6"

R-Value: 33 49

Insulation: Class 1 foamed in place Modified Polyisocyanurate

Door Panel: Interior frame consists of high density plastic lumber clad with the specified metal; the core is injected with foamed-in-place modified polyisocyanurate. All seams are sealed.

Vertical casings & header:

High density plastic lumber clad with the specified metal

Metal: 24, 26 gauge stucco embossed, painted galvanized steel.

Hardware: Heavy duty hardware and track coated for corrosion resistance, including:

- Double "J" door track
- Each door panel suspended on two 4 wheel ball-bearing trolleys
- Floor mounted, adjustable, non-marring, self-lubricating stay rollers
- Spring loaded idler sprocket with adjustment to maintain proper drive chain tension
- Manual disconnects on front and back of door with concealed release on wallside

Gaskets: Cloth reinforced neoprene gaskets, bulb type on vertical casings and header and sweeper gasket on bottom of door panel

Safety Edge: Full height pneumatic instant reversing safety edge on leading edge of door panel

Defrost: Freezer doors equipped with 120 volt perimeter cables to keep gaskets frost free

Operation: Manual, Electric

Options

- Stucco embossed aluminum cladding
- Stainless steel cladding
- White F.R.P. with stainless trim
- Freezer door with 120 V perimeter heater cable
- 12¾" x 12¾" insulated or heated vision panel
- Rain hood
- Kickplates
- Locking device
- Inside casings
- Meat rail construction
- Standard or high speed operator
- Radio control open/close
- Photo cell open/close/safety
- Motion detector open/close/safety
- Loop detector open/close/safety
- Time delay close
- Closing signal warning control
- Partial opening pedestrian control
- Electric interlock
- Heated control panel
- Custom designed doors to meet your individual needs

Hercules Power Operator UL Listed

- Operator listed under UL standard 508A for industrial control panels
- Brushless DC motor system provides necessary power in compact package
- NEMA-4 control box with adaptive controller
- Pneumatic instant reversing safety edge
- External wiring enclosed in waterproof flexible conduit
- Calibration to any door size with external battery backup
- Roller drive chain incorporating special link for manual disconnect

Operating Speed

Standard Electric Operator

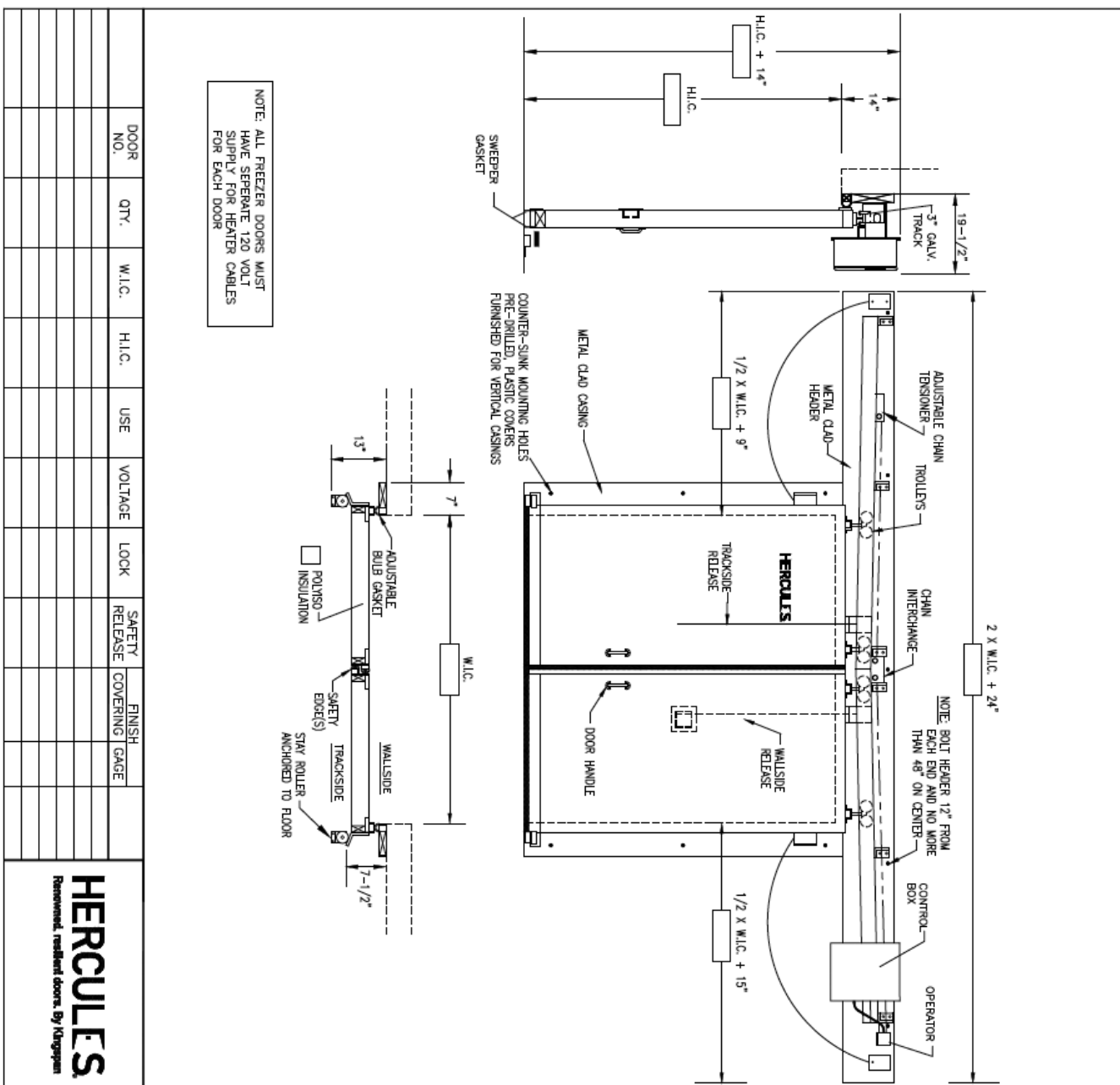
The standard operating speed of a roller chain drive operator with standard electric motor is fully adjustable from 20" per second to 50" per second through operator calibration and different gear drive options. To increase the opening or closing speed the following operator is available.

Optional High Speed Electric Operator

Hercules Doors offers an optional High Speed Electric Operator. The High Speed Operator consists of a higher power electric motor for all doors. This operator provides fully adjustable opening speeds from 30" inches per second up to 80" per second through operator calibration and different gear drive options.

Operator Electric Requirements

Operator Voltage	Amp Draw	Operator Voltage	Amp Draw
Standard Speed		High Speed	
115 VAC	20 A	115 VAC	20 A
208 VAC	12 A	208 VAC	12 A
230 VAC	10 A	230 VAC	10 A
460 VAC	5 A	460 VAC	5 A
575 VAC	4 A	575 VAC	4 A



NOTE: ALL FREEZER DOORS MUST HAVE SEPARATE 120 VOLT SUPPLY FOR HEATER CABLES FOR EACH DOOR

DOOR NO.	QTY.	W.I.C.	H.I.C.	USE	VOLTAGE	LOCK	SAFETY RELEASE	FINISH COVERING	GAGE

HERCULES
 Renowned, resilient doors, By Kingspan

INSTALLATION REQUIREMENTS

- THE FLOOR UNDER THE DOOR MUST BE LEVEL AND SMOOTH
- THE WALL BEHIND THE DOOR FRAME MUST BE SMOOTH AND IN A COMMON PLANE

DOOR PANEL AND FRAME

- DOOR THICKNESS $\square 6"$ (FREEZER ONLY)
- TEMPERATURES
 WALL SIDE = _____ HINGESIDE = _____
 SLIDE DIRECTION = _____
 DIRECTION: DRIFT = _____
- PANEL AND FRAME CLADDING
 WHITE STUCCO EMBOSSED GALV STEEL
 MILK FINISH STUCCO EMBOSSED STEEL
 SANDER STUCCO EMBOSSED GALV STEEL
 WHITE STUCCO EMBOSSED ALUMINIUM
 MILK FINISH STUCCO EMBOSSED ALUMINIUM
- JAMBS
 JAMB DEPTH: HIDE CLAD IN SAME MATL AS DOOR
 CHANNEL TRIM
 OTHER
- OPERATOR
 STANDARD OPERATOR
 HIGH SPEED OPERATOR

OPTIONS

- FREEZER DOOR
 HEATER WIRE RUN AROUND PERIMETER OF DOOR LEAF AND IN BOTTOM OF DOOR
- INSIDE CASINGS
- HOOD
 MARCHED TO FACE OF DOOR
 OTHER
- DRINKPLATES
 HINGESIDE: DR24" DR3" DR6" OTHER
 HIGHT: DR18" DR14"
 DR18 GA STAINLESS STEEL
 DR16 GA GALV STEEL
 OTHER
- VISION PANEL: $12 \times 3/4"$ INSULATED
 $12 \times 3/4" \times 12 \times 3/4"$
 $12 \times 3/4" \times 12 \times 3/4"$ HEATED
 OTHER
- LOCKING DEVICE
 WALLSIDE
 WITH POWER CUTOFF AND SAFETY RELEASE
 WITH POWER CUTOFF -- NO SAFETY RELEASE
- RADIO CONTROL
- PHOTOCELL
 OPEN
 SAFETY
- MOTION DETECTOR
 OPEN
 SAFETY
- LOOP DETECTOR
 OPEN
 SAFETY
- TIMER DELAY CLOSE

ELECTRIC BI-PARTING SLIDING DOOR

SCALE NONE	DRAWN BY _____
DATE _____	JOB NO. _____
FOR: _____	DRAWING NUMBER _____

INSTALLATION REQUIREMENTS

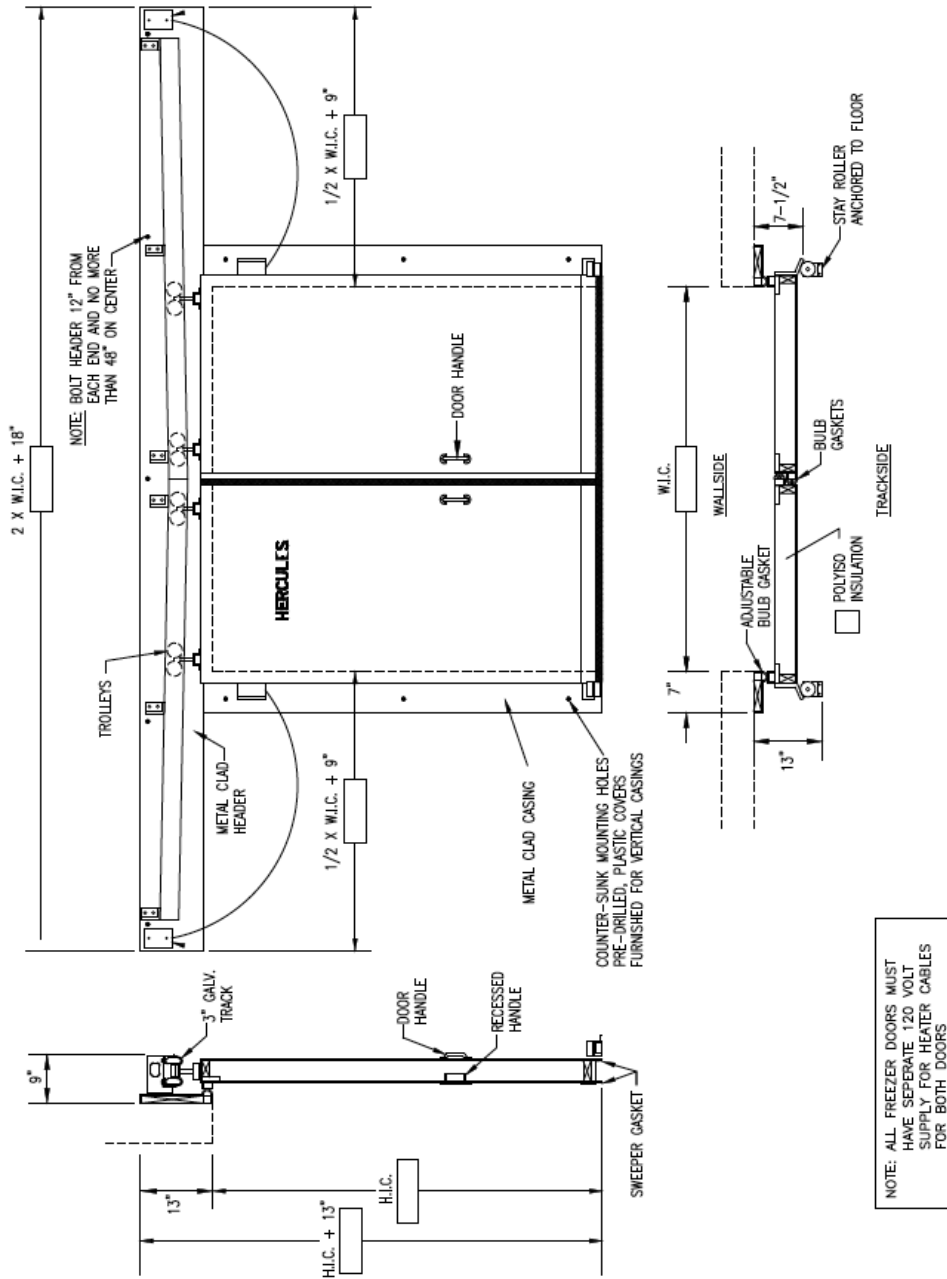
- I. THE FLOOR UNDER THE DOOR MUST BE LEVEL AND SMOOTH
- II. THE WALL BEHIND THE DOOR FRAME MUST BE SMOOTH AND IN A COMMON PLANE

DOOR PANEL AND FRAME

1. DOOR THICKNESS 4" (FREEZER ONLY)
2. TEMPERATURES WALL SIDE HINGESIDE = _____ F = _____ F
3. SLIDE DIRECTION LEFT RIGHT
4. PANEL AND FRAME CLADDING WHITE STUCCO EMBOSSED GALV STEEL PINK STUCCO EMBOSSED STEEL TAN LEXAN STEEL SANDSTONE STUCCO EMBOSSED GALV STEEL WHITE STUCCO EMBOSSED ALUMINUM MILL FINISH STUCCO EMBOSSED ALUMINUM
5. JAMBS JAMB DEPTH _____ JAMB CLAD IN SAME MATL AS DOOR CHANNEL TRIM OTHER _____

OPTIONS

6. FREEZER DOOR HEATER WIRE RUN AROUND PERIMETER OF DOOR LEAF AND IN BOTTOM OF DOOR
7. INSIDE CASINGS
8. HOOD MISMATCHED TO FACE OF DOOR OTHER _____
9. KICKPLATES HINGESIDE HEIGHT: 18" 24" 36" 48" OTHER _____ ALUMINUM DIAMOND PLATE 18 GA. STAINLESS STEEL OTHER _____ GALV. STEEL
10. VISION PANEL 12 3/4" X 12 3/4" INSULATED 12 3/4" X 12 3/4" HEATED OTHER _____
11. LOCKING DEVICE WALLSIDE WITH SAFETY RELEASE WITH NO SAFETY RELEASE



MANUAL BI-PARTING SLIDING DOOR

SCALE: NONE	DRAWN BY
DATE	Job No.
FOR:	DRAWING NUMBER

HERCULES Renowned, resilient doors. By Kingspan		USE																		
		FINISH COVERING	GAGE																	
DOOR NO.	QTY.	W.I.C.	H.I.C.	LOCK	SAFETY RELEASE															



Kingspan Insulated Panels, Inc.
726 Summerhill Drive
Deland, FL 32724-2024

Phone (386) 626-6789

E-Mail: info@kingspanpanels.us

www.kingspanpanels.us