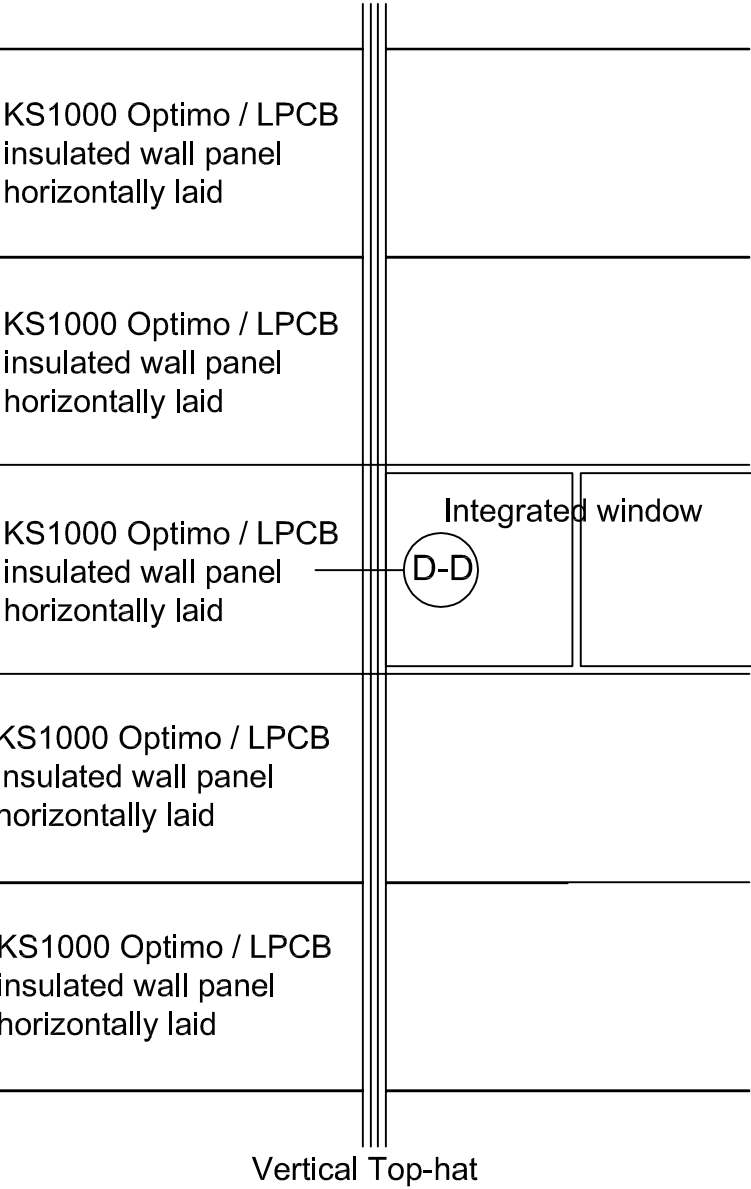
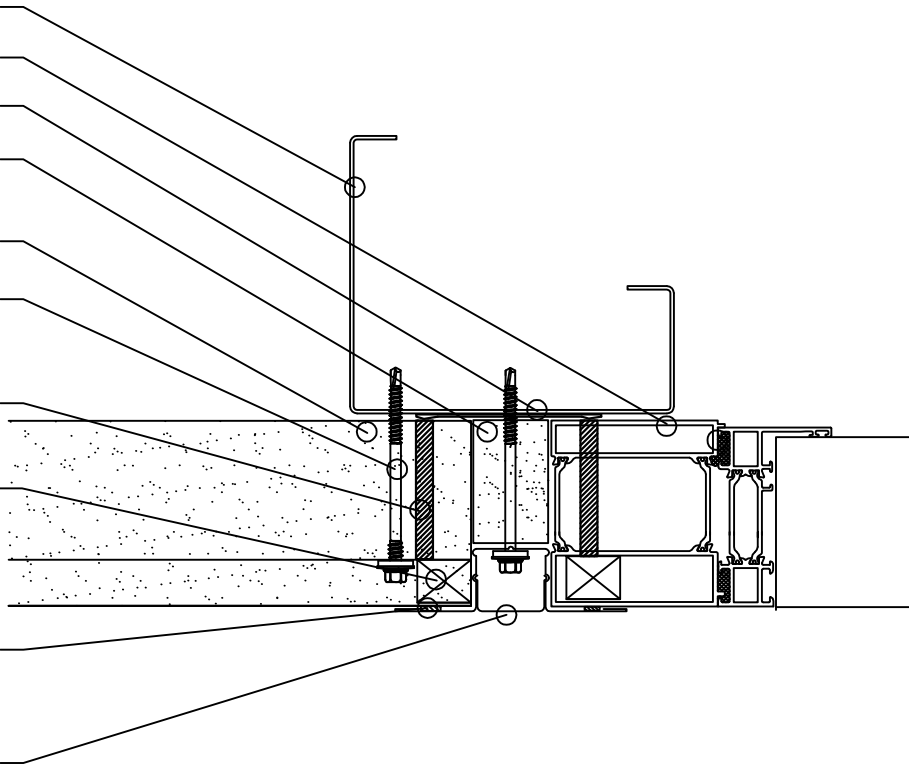


Wall Elevation



- Kingspan Horizontal Panel Vertical Support
- Intergrated window unit
- Air seal - EPDM VJ2 bubble gasket 95x10mm
- Site applied LPCB certified PIR insualtion board
any gaps filled with fire rated cannister insualtion
- KS1000 Optimo / LPCB insulated wall panel horizontally laid
- Self-drilling self-tapping primary fixings with
minimum 16mm diameter non-ferrous EPDM backed washer
- Air seal gun grade seal to male joint inline with internal air seal
- AWP joint filler bedded on gun grade sealant
- 4mm diameter butyl rubber sealant
- Option A vertical tophat 30mm deep with
100mm sealed butt straps at maximum 6000mm lengths



SECTION D-D

Notes:

Rev	Description	Chkd	Date



Insulated Roof
& Wall Panels



Kingspan Limited
Greenfield Business Park No. 2, Greenfield,
Holywell, Flintshire, CH8 7GJ, UK
www.kingspanpanels.co.uk
t: 0800 587 0090

Carrickmacross Road,
Kingscourt, Co.Cavan, Ireland
www.kingspanpanels.ie
t: 00353 42 96 98529

Client

Project

Drawing

KS1000 Optimo Hz
Integrated Window Jamb

Status

Drawn by	Checked by	Date
RL	JP	12/12/15

Drawing Number	Revision
OptimoHz15028	

*This drawing is the property of Kingspan and
may not be reproduced in any way without
written consent from Kingspan.*