





## Isocab - Retan Cleanroom Constructions

RETAN DEVELOPMENTS NV/SA is established in 1981, as manufacturer and installer of modular panel systems special developed for use in controlled environment. Over the years we acquired a high level of craftsmanship in building the shell for cleanrooms, bio-confinements and all types of controlled environments

In order to enlarge its position on the international market, the company merged in 2003 with ISOCAB NV and became in this new organisation an independent department.

RETAN Cleanroom Constructions has for mission to develop the strategy and operations dedicated to the cleanroom branches.

Today, ISOCAB NV, forms an integral part of THYSSENKRUPP STEEL

From the day of its foundation, the Retan team gave their all in order to supply innovating solutions, tailor made and of high quality, using reliable systems. We are present on the international market in the different branches needing cleanrooms and handle projects from concept up to the construction and installation of the systems.

RETAN Cleanroom Constructions has built more than 1.000.000 m<sup>2</sup> of cleanrooms on all continents of the world and is playing a leading roll in the construction of cleanrooms in different branches such as : pharmaceuticals, biotechnological, cosmetics, electronics, optics, medical devices, food, etc....



## Wall systems

### Flush systems

- CR8
- CRA8

### Semi flush systems

- PHARMA LIGHT

## Ceiling systems

### Flush systems

- ISO8
- CRA8

### Semi flush systems

- PHARMA LIGHT

## Door systems

### Flush systems

- Single doors
- Double doors

### Semi flush systems

- Single doors
- Double doors
- Sliding doors





## Window assemblies

Flush systems

Semi flush systems

- Clips Window
- Windows with rubber gasket



## Light fixtures

- Top access
- Bottom access



## Accessories

## Flush systems

### CR8

- Thickness : 80 mm
- Smooth surface on both sides of the panel
- Self supporting and demountable
- Consist of two shells of lacquered steel sheets bonded by injected PUR or PIR foam
- Connection with eccentric cam-lock system
- Modular by steps of 300 mm, optional tailor made
- Tubing for electric cabling integrated in each panel
- Suitable for new projects and for refurbishments of all kind

### CRA8

- Thickness : 80 mm
- Smooth surface on both sides of the panel
- Self supporting
- Consist of two shells of lacquered steel sheets with aluminium frame, bonded by injected PUR or PIR
- Connection with clip profile
- Modular by steps of 300 mm, optional tailor made
- Possibility to incorporate in the panel, tubing for electric cabling
- Suitable for new projects and for refurbishments of all kind

## Semi Flush systems

### PHARMA LIGHT

#### Core in PUR or PIR

- Thickness : 40, 60, 80, 100, 120, 140 mm
- Smooth surface on both sides of the panel
- Self supporting
- Consist of two shells of lacquered steel sheet bonded by expanded PUR or PIR foam
- Modules of 1180 mm wide
- Suitable for new projects and for refurbishments of all kind

#### Core in mineral wool DECAROC®

- Thickness : 60, 80, 100, 120, 150 mm
- Smooth surface on both sides of the panel
- Self supporting
- Consist of two shells of lacquered steel sheet, core of mineral wool DECAROC®
- Modules of 1170 mm wide
- Suitable for new projects and for refurbishments of all kind



## Flush systems

### IS08

- Thickness : 80 mm
- Smooth surface on both sides of the panel
- Ceiling's suspension invisible in the room
- Consist of two shells of lacquered steel sheets bonded by injected PUR or PIR foam
- Connection with eccentric cam-lock system
- Dimensions in function of the structure
- Suitable for new projects and for refurbishments of all kind

### CRA8

- Thickness : 80 mm
- Smooth surface on both sides of the panel
- Ceiling's suspension invisible in the room
- Consist of two shells of lacquered steel sheets with aluminium frame, bonded by injected PUR or PIR foam
- Connection with clip profile
- Dimensions in function of the structure
- Suitable for new projects and for refurbishments of all kind

## Semi Flush systems

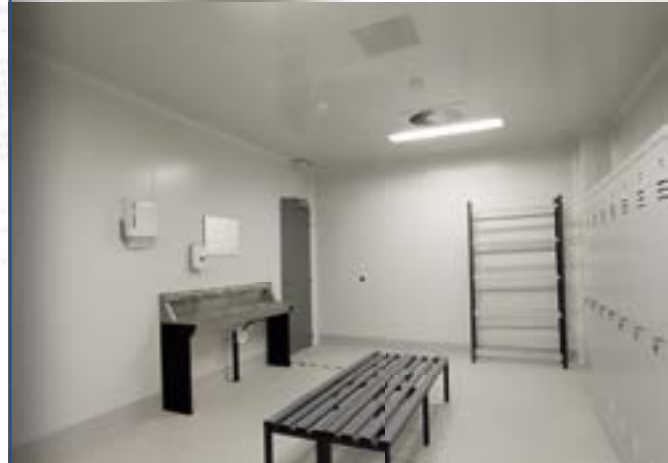
### PHARMA LIGHT

#### Core in PUR or PIR

- Thickness : 40, 60, 80, 100, 120, 140mm
- Smooth surface on both sides of the panel
- Ceiling's suspension visible in the room
- Lacquered T- profile suspension
- Consist of two shells of lacquered steel sheet bonded by expanded PUR or PIR foam
- Modules of 1180 mm wide
- Length calculated in function of the required span, openings and load
- Suitable for new projects and for refurbishments of all kind

#### Core in mineral wool DECAROC®

- Thickness : 60, 80, 100, 120 mm
- Smooth surface on both sides of the panel
- Ceiling's suspension visible in the room
- Lacquered T- profile suspension
- Consist of two shells of lacquered steel sheet, core of mineral wool DECAROC®
- Modules of 1170 mm wide
- Length calculated in function of the required span, openings and load
- Suitable for new projects and for refurbishments of all kind





## Flush - Wall systems CR8 & CRA8

### SWINGING DOORS

#### Single doors

- Doorframe type ALU-C
- Thickness of door leaf : 80 mm
- Dimensions in function of the needs.
- Door leaf of lacquered steel sheet, core of injected PUR or mineral wool
- Doorframe in lacquered aluminium pre assembled in the factory

#### Double doors

- Doorframe type ALU-C
- Thickness of door leaf : 80 mm
- Dimensions in function of the needs.
- Door leaf of lacquered steel sheet, core of injected PUR or mineral wool
- Doorframe in lacquered aluminium assembled on site

## Semi flush - Wall systems PHARMA LIGHT

### Single doors

- Doorframe type ALU-U
- Thickness of door leaf : 40 mm
- Dimensions in function of the needs.
- Door leaf of lacquered steel sheet, core of injected PUR or mineral wool
- Doorframe in lacquered aluminium pre-assembled in factory

### Double doors

- Doorframe type ALU-U
- Thickness of door leaf : 40 mm
- Dimensions in function of the needs.
- Door leaf of lacquered steel sheet, core of injected PUR or mineral wool
- Doorframe in lacquered aluminium assembled on site

### Sliding doors - Wall Systems CR8, CRA8 & PHARMA LIGHT

- Thickness of door leaf : 40 ou 60 mm
- Dimensions in function of the needs. .
- Door leaf of lacquered steel sheet, core of injected PUR or mineral wool
- Doorframe in lacquered aluminium assembled on site

## Options on all door systems

- Flush window
- Automation of door opening / closing
- Kit interlocking
- Door closer "built on" or "integrated"
- Stainless steel "kick plate" flush integrated in the door leaf
- Emergency exit door and crash panels



## Flush - Wall systems CR8 & CRA8

- Flush both sides of the panel
- Laminated glass, thickness 6 mm, glued on both sides of aluminium frame
- Frame of extruded aluminium lacquered in the same color as the wall panels
- Dimensions in function of the needs
- Thickness of the window assembly : 80 mm
- Silicagel integrated in the framing

## Semi flush - Wall systems PHARMA LIGHT

### « Clips » type window

- Clipped frame system (thickness 2 mm)
- Laminated glass, thickness 6 mm, glued on both sides of aluminium frame
- Frame of extruded aluminium lacquered in the same colour as the wall panels
- Dimensions in function of the needs
- Thickness of the window assembly adapted to the wall panel thickness
- Silicagel integrated in the framing

### Window assembly with rubber seal

- Window assembled in our factory
- Rubber seal, black
- Thickness 60 or 80 mm
- One standard dimension 900 x 1200 mm
- Laminated glass of 6 mm on both sides



# Light fixtures



## Built in type

### Top access

- Installation in walkable ceiling, access from technical void
- Lamps type T8 : - 3x36W  
- 2x36W  
- 4x18W  
- 2x18W
- Lamps type T5 : - 2x28W  
- 2x54W  
- 4x14W



### Bottom access

- Installation in non-walkable ceiling or reduced technical void
- Lamps type T8 : - 3x36W  
- 2x36W  
- 4x18W  
- 2x18W
- Lamps type T5 : - 2x28W  
- 2x54W  
- 4x14W



### Options

- Inactinic colour
- Emergency battery
- Ex execution ...

## Accessories

- Recessed floor track
- Extra flat PVC plinth
- Coving in PVC or lacquered aluminium
- Pass-Box
- Air return duct integrated in the panel thickness
- Technical panel for integration of services, one shell removable
- Reinforcement profile
- Access door for plenum
- Crash panel
- Protection on wall panel made from PVC or stainless steel
- Many more solutions on simple request ...





**Isocab NV**

Treurnietstraat 10, 8531 Bavikhove - Harelbeke, Belgium  
Tel: +32 (0)56 73 43 11, Fax: +32 (0)56 73 43 22  
www.isocab.com - info@isocab.be

**Isocab France SAS**

Z.I. de Grande Synthe, 3 Rue Charles Fourier, CS 30142, 59792 Grande Synthe Cedex, France  
Tél: +33 (0)3 28 29 24 40, Fax: +33 (0)3 28 29 24 50  
www.isocab.com - info@isocabfrance.fr

All details contained in this brochure are only guaranteed insofar as they have been expressly and specifically confirmed in writing. Subject to technical modifications.  
GB • Info 2.3.1. • 1.2005 • LB

Retan-121212-E

