

# Structural Products & Systems

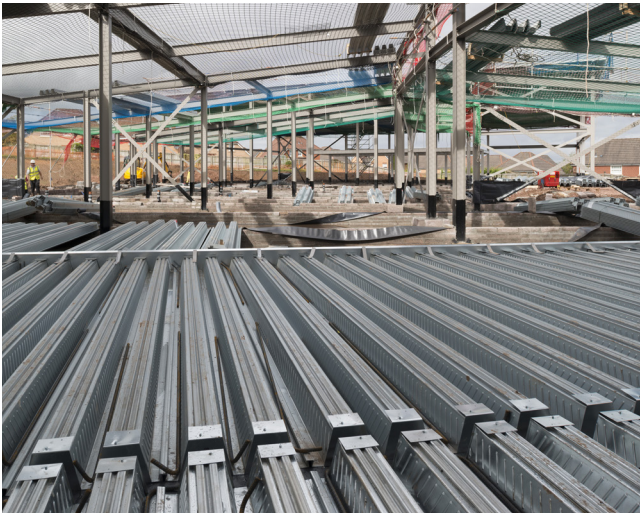
# Case Study



Project: Saint Mark's Primary School, Hamilton  
Project Type: Primary School, New Build  
Products Used: Multideck 146

# Saint Mark's Primary School

# Case Study



## Education

### Project Type:

Primary School, New Build

### Main Contractor:

Maclay Civil Engineering Ltd

### Installer:

MSW (UK) Ltd

### Products Used:

- Multideck 146 Structural System

# Saint Mark's Primary School

# Case Study

## School does its Homework on Multideck

More than 2000m<sup>2</sup> of Kingspan Multideck 146 has been installed on the refurbishment of Saint Mark's Primary School in Hamilton, South Lanarkshire.

The school, which opened to pupils in May 2014, is one of many being modernised as part of South Lanarkshire Council's £814 million Primary Schools Modernisation Programme, and it was imperative that each stage of the project was completed within a tight schedule.

No other trapezoidal-profiled floor deck system spans as far as Multideck 146, which is engineered to enhance steel and concrete performance. Multideck 146 supports normal weight concrete, on spans of up to 6m, without the need for temporary props; offering quick, efficient installation and new opportunities for efficiency in construction.

Multideck 146 requires 31% less concrete than the other 80mm trapezoidal decks of equivalent slab depth currently available on the market. A reduction in concrete volume inevitably results in quicker laying times and, on larger projects, can even decrease the number of concrete deliveries needed to site. Furthermore, a lighter concrete slab could also result in the use of smaller, less costly supporting structure and foundations; providing the potential for further economic savings.

Alan Stokoe from installers MSW (UK) Ltd said: "In 1990 MSW joined forces with Kingspan, forming a partnership that enabled MSW to supply and install Multideck whilst adding expertise and experience across the board.

The partnership provides clients with the very best products and solutions possible, proving to be a natural fit and going beyond the delivery of exceptional decking systems. Clients can also expect an unrivalled level of service and insight, coupled with the convenience and value of having a 'complete solution' at their fingertips.



**...Multideck 146 was perfect for this project - cost-effective and quick to install, just what local authorities are looking for in their projects."**

A number of services and tools are available to ensure customers receive the best support possible. The Multideck design software, Toolkit 7, provides comprehensive composite floor design, including concrete and reinforcement, which allows the user to easily select the right Multideck solution. The Kingspan Technical Services Department also provides an engineering and advisory service to specifiers and end users on the use and selection of the Multideck range of composite decks.

South Lanarkshire Council has recently entered into a partnership agreement with three construction firms to work on the first tranche of the second phase of primary schools. Morgan Sindall plc, Lend Lease Ltd and Kier Construction have been awarded the contracts which will be undertaken utilising the PPC2000 partnering contract.

**Kingspan Limited**

Sherburn, Malton, North Yorkshire, YO17 8PQ

t: +44 (0) 1944 712000 f: +44 (0) 1944 710830 [www.kingspanstructural.com](http://www.kingspanstructural.com)

Carrickmacross Road, Kingscourt, Co Cavan, Ireland

t: +353 (0) 42 96 98500 f: +353 (0) 42 96 98572 [www.kingspanstructural.com](http://www.kingspanstructural.com)

For the product offering in other markets please contact your local sales representative or visit [www.kingspanpanels.com](http://www.kingspanpanels.com)

Care has been taken to ensure that the contents of this publication are accurate, but Kingspan Limited and its subsidiary companies do not accept responsibility for errors or for information that is found to be misleading. Suggestions for, or description of, the end use or application of products or methods of working are for information only and Kingspan Limited and its subsidiaries accept no liability in respect thereof.